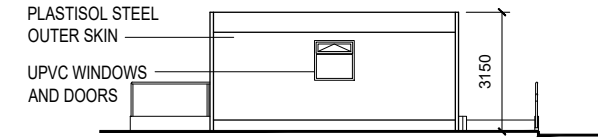
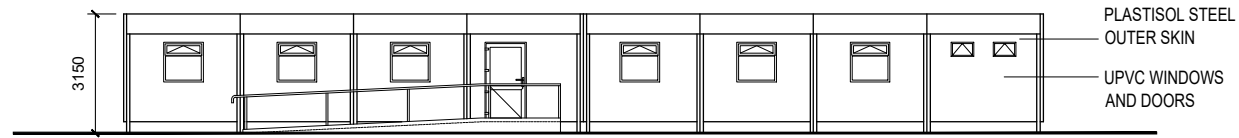


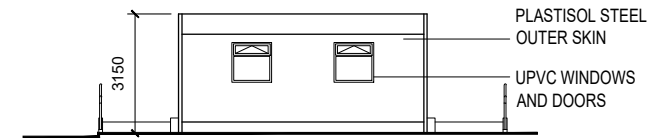
PROPOSED SOUTH ELEVATION  
SCALE 1:200



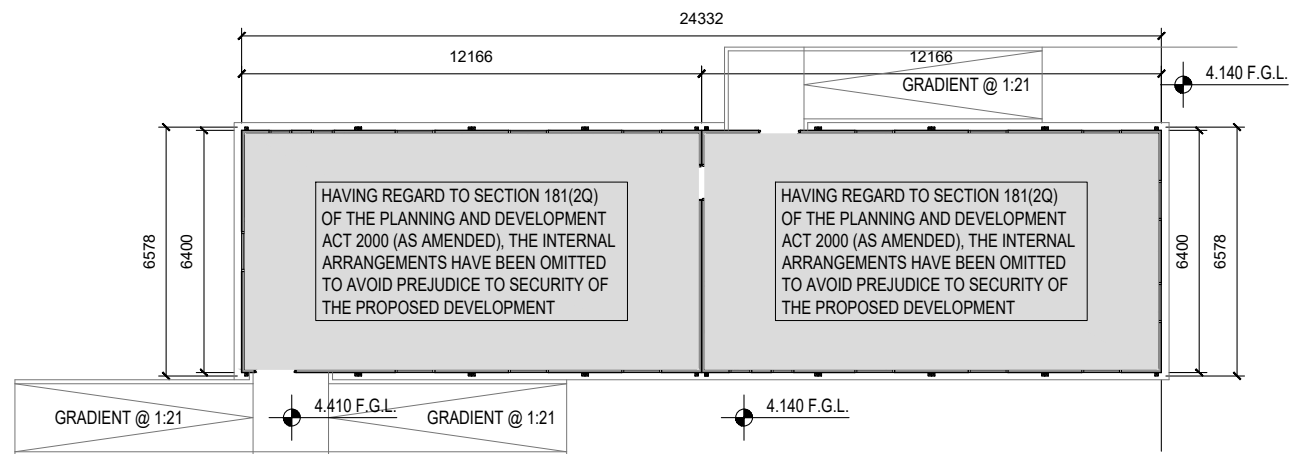
PROPOSED EAST ELEVATION  
SCALE 1:200



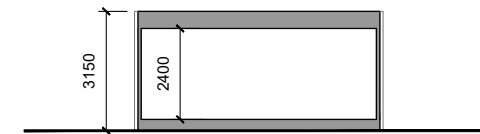
PROPOSED NORTH ELEVATION  
SCALE 1:200



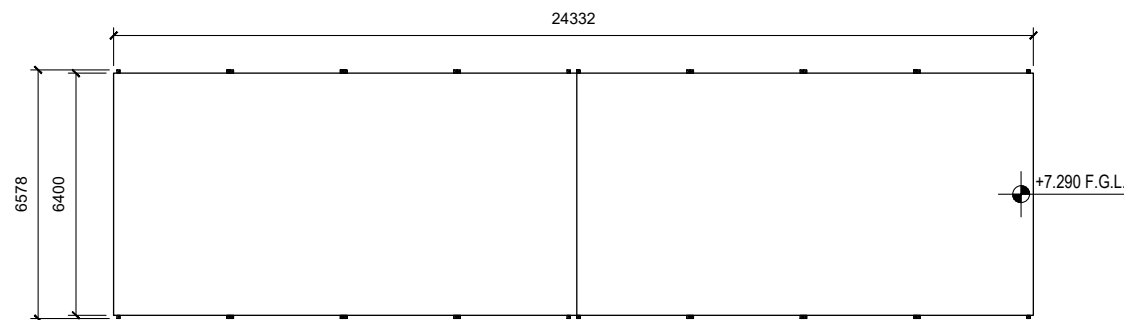
PROPOSED WEST ELEVATION  
SCALE 1:200



PROPOSED GROUND FLOOR PLAN  
SCALE 1:200

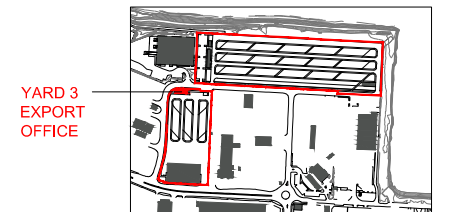


PROPOSED SECTION  
SCALE 1:200



PROPOSED ROOF PLAN  
SCALE 1:200

BUILDING LOCATION KEY



Architectural Services    State / Principal Architect    Design Team

Drawing Revisions

Drawing Title

Project Title



OPW Dublin,  
52, St. Stephen's Gn., D2.  
Telephone: (01) 647 6000  
LoCall: 1890 213414  
Website: www.opw.ie

Ciarán O'Connor, FRIAI, State / Principal Architect  
Director of Architectural Services  
Charles Moore, MRAI  
Head of Brexit Unit

Cliodhna Rice - MRAI Senior Architect  
Conor O'Donnell - MRAI  
Sarah Heery - MRAI  
Donal McIntyre - Graduate Architect

REF	DESCRIPTION	DATE:
A REV:		
B REV:		
C REV:		
D REV:		
E REV:		

DRAWN	CHECKED	SCALE	DATE
COD	CR	1:200 @A3	May 2020

PROJECT NO.	STATUS	NUMBER	REV.
A.20.001	EIAR	20-102	

Yard 3 Export Office

Proposed Plans, Elevations & Section

Brexit Infrastructure at Dublin Port

Dublin Port, Dublin 3